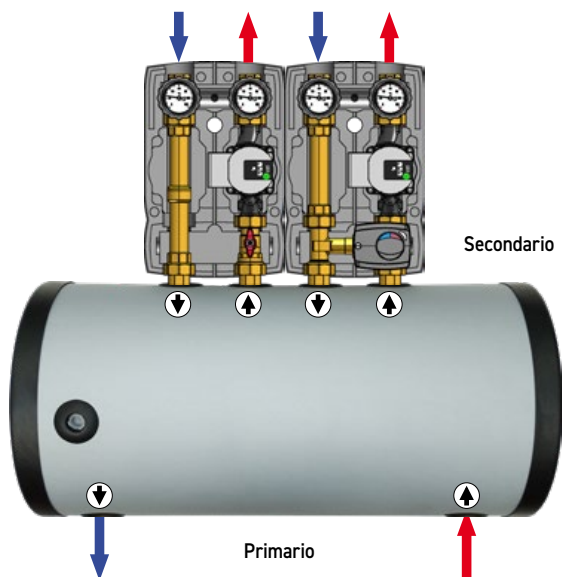
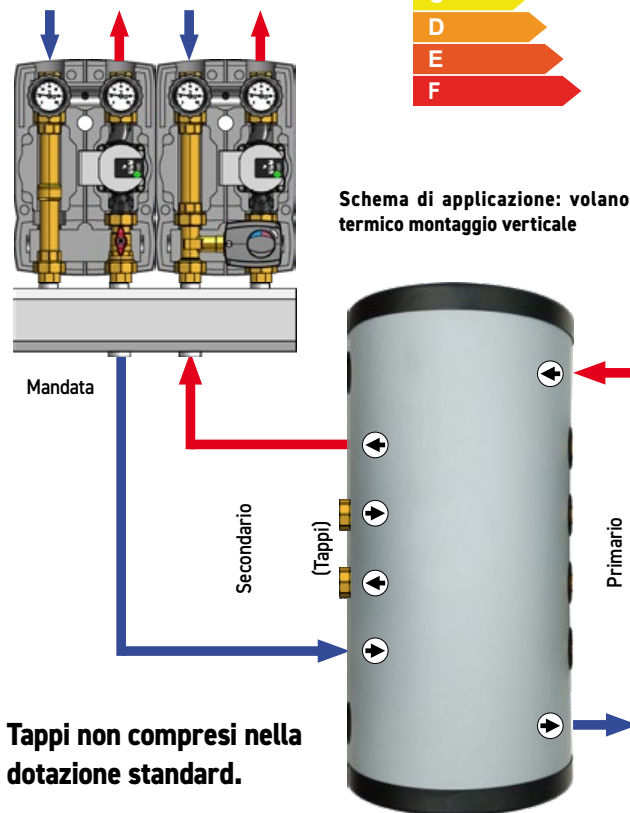


Schema di applicazione: volano termico montaggio orizzontale

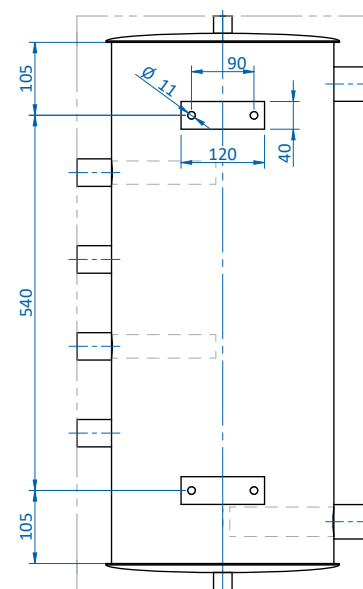
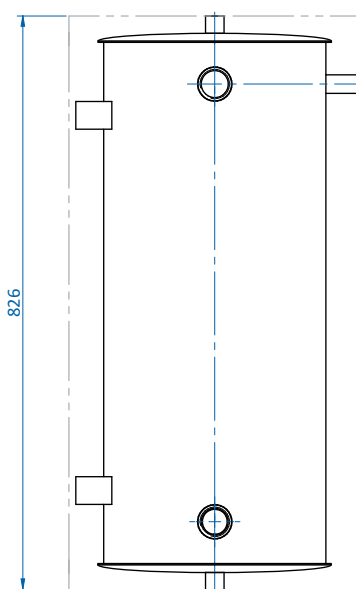
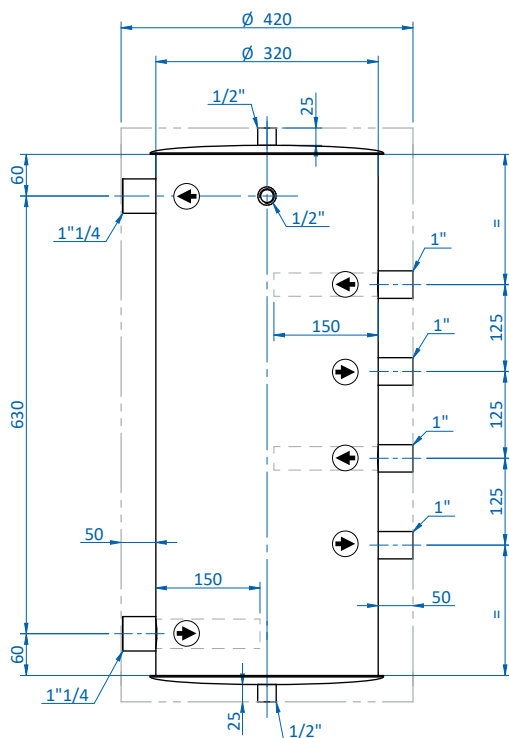


Schema di applicazione: volano termico montaggio verticale

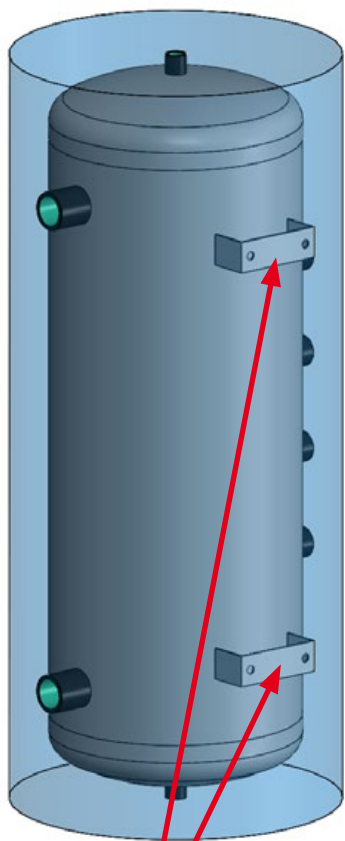


Tappi non compresi nella dotazione standard.

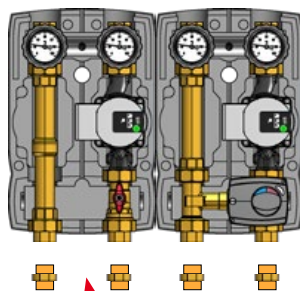
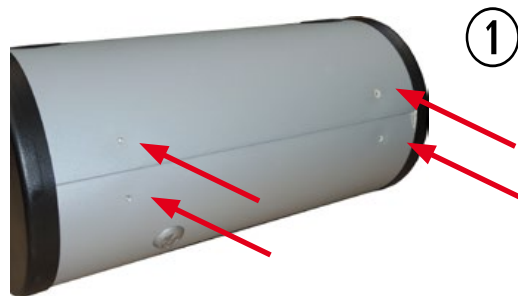
Dimensioni



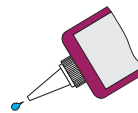
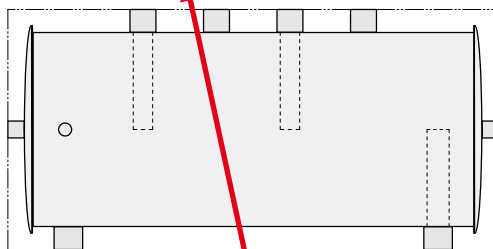
Codice	Connessione primario	Connessione secondario	Moduli / interasse	Capacità	Pressione di lavoro	Temperatura max. di lavoro	Temperatura min. di lavoro	Pressione di test
HWDN25/125-50	G 1"1/4 F	G 1" F	DN25 - 125 mm	50 L	6 bar	90°C	-10°C	9 bar



Staffe di fissaggio a muro fornite in dotazione.



Per la connessione dei moduli, è necessario utilizzare dei raccordi 1" M x 1" M (non inclusi nella fornitura standard).



Sigillante