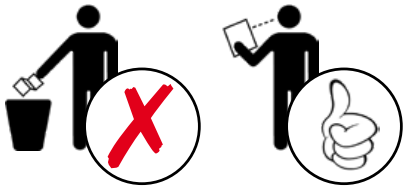
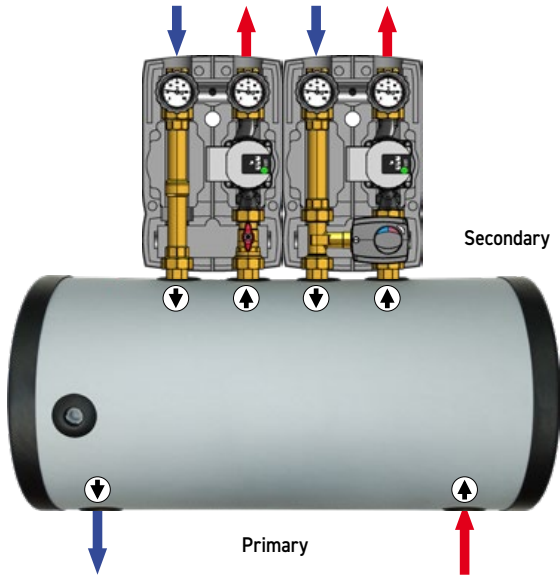


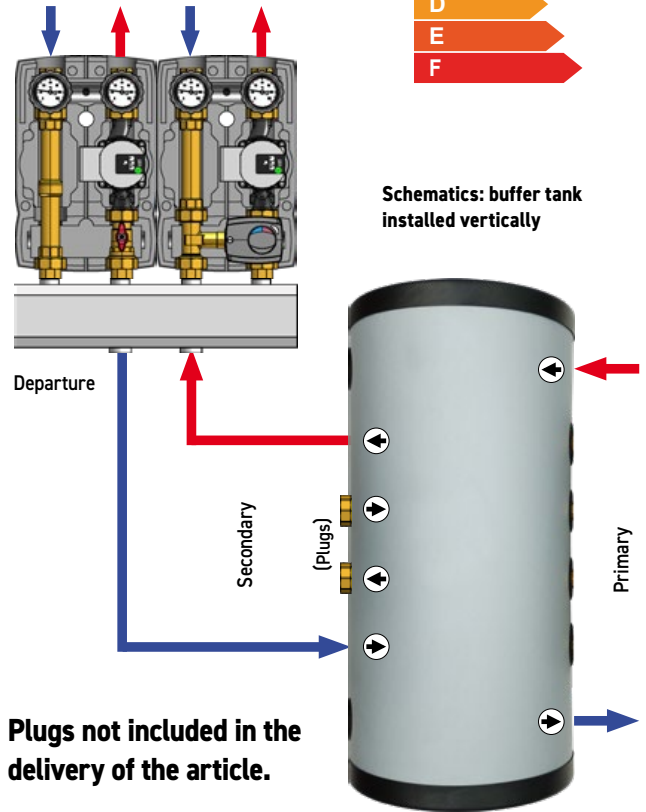
HOT & COLD BUFFER TANK - DN25



Schematics: buffer tank installed horizontally

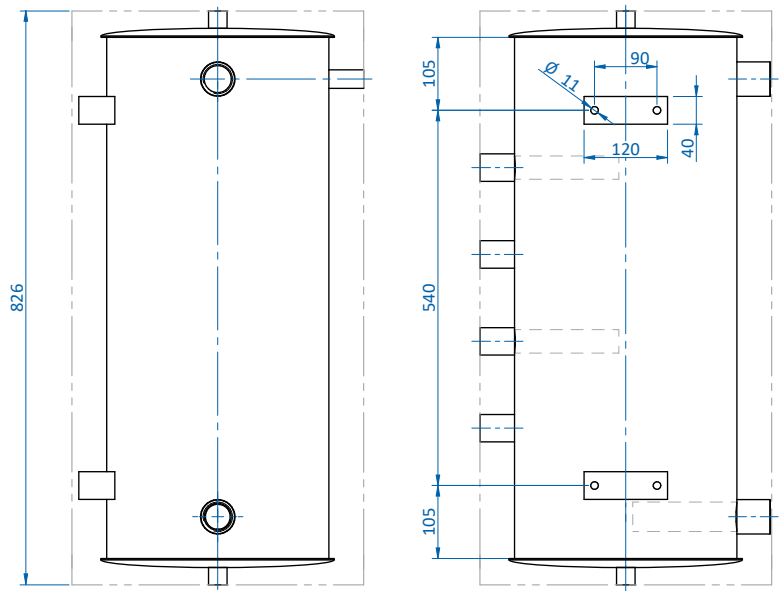
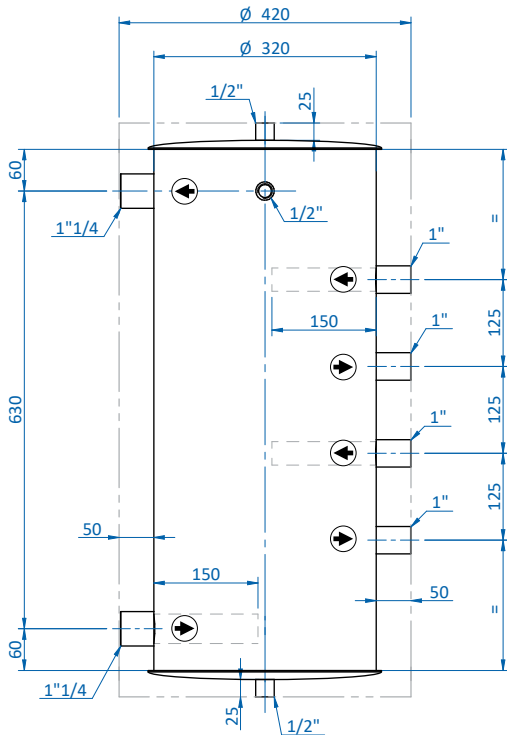


Schematics: buffer tank installed vertically



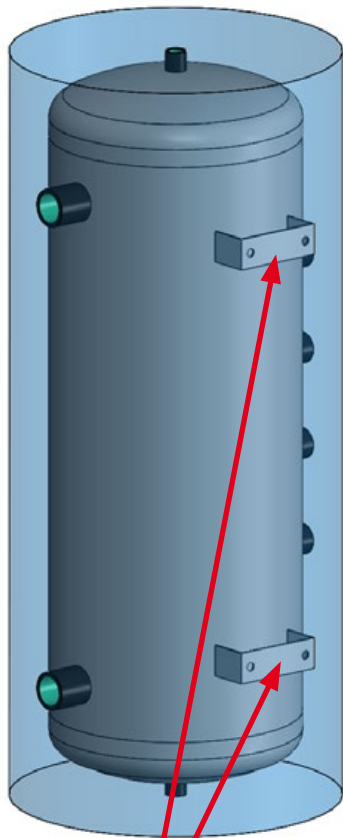
Plugs not included in the delivery of the article.

Dimensions

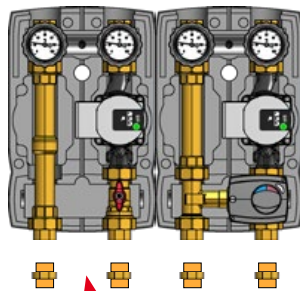
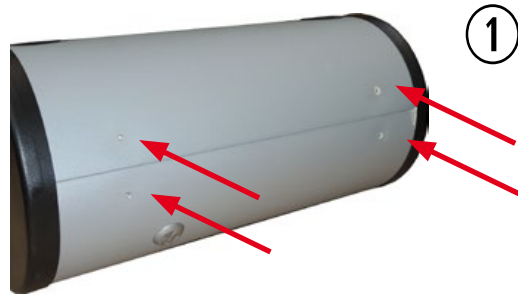


Code	Primary connection	Secondary connection	Pump unit / center distance	Capacity	Working pressure	Max. working temperature	Min. working temperature	Pressure test
HWDN25/125-50	G 1 1/4 F	G 1" F	DN25 - 125 mm	50 L	6 bar	90°C	-10°C	9 bar

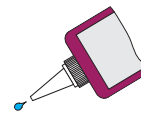
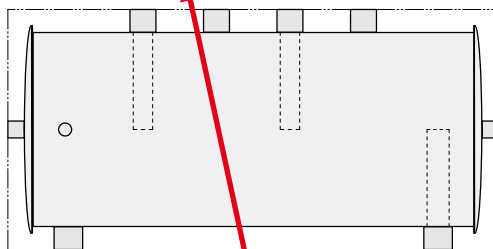
HOT & COLD BUFFER TANK - DN25



Wall mounting bracket included in the delivery of the article.



For the installation of the pump units it is necessary to use 1" nipples (not included in the delivery of the article).



Sealing paste