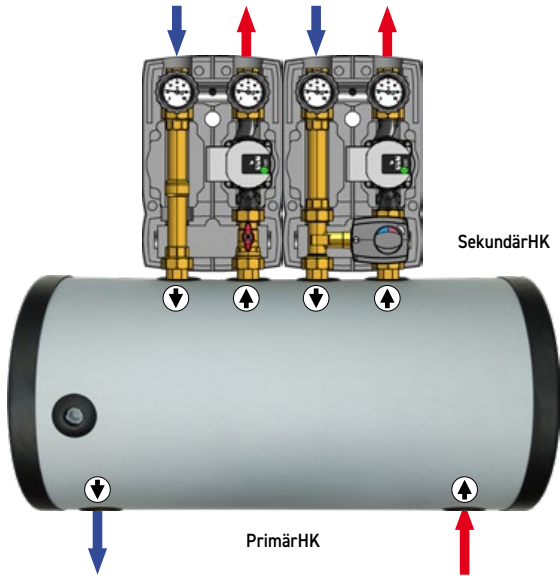
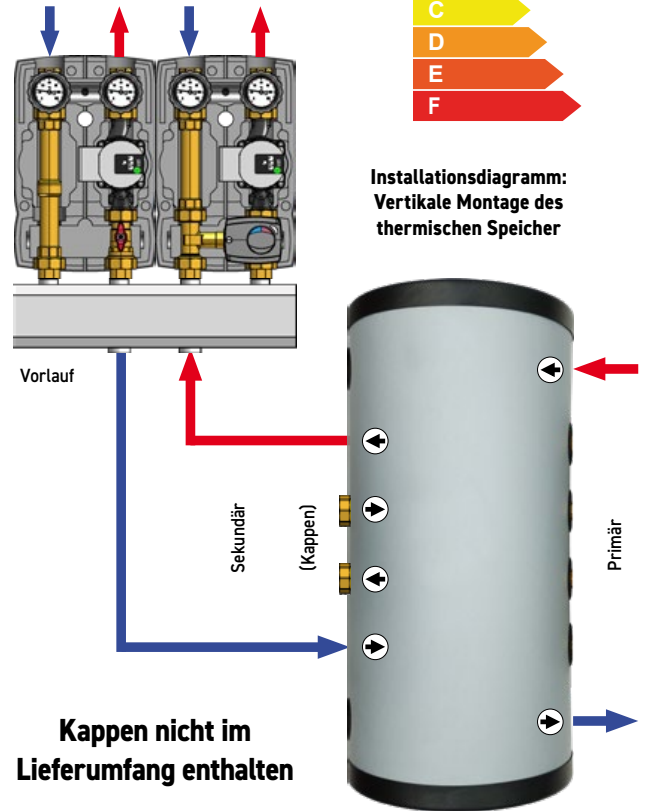


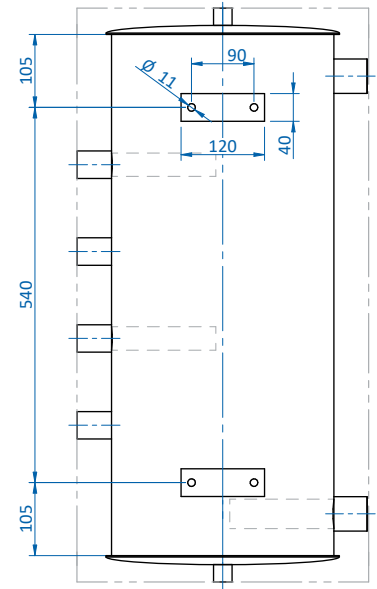
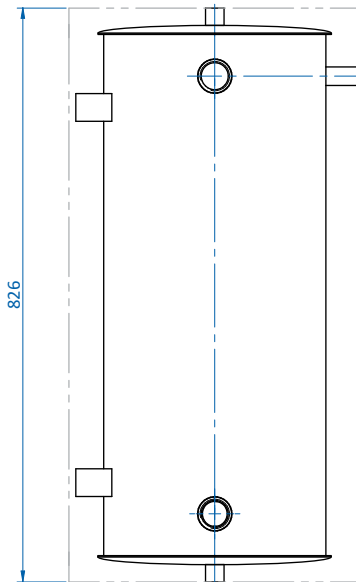
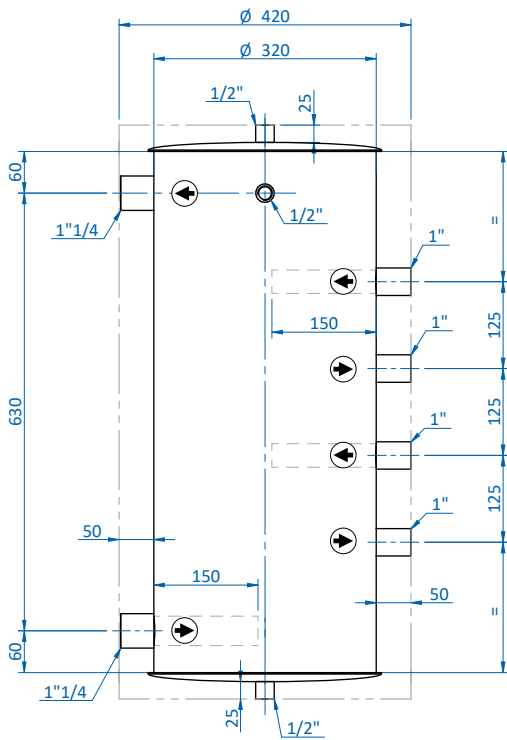
Installationsdiagramm:
horizontale Montage des thermischen Speicher



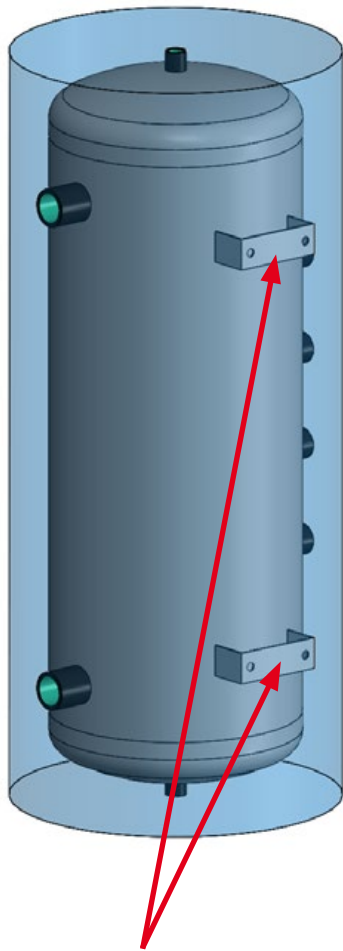
Installationsdiagramm:
Vertikale Montage des thermischen Speicher



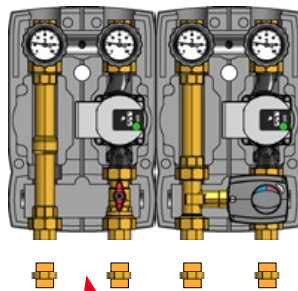
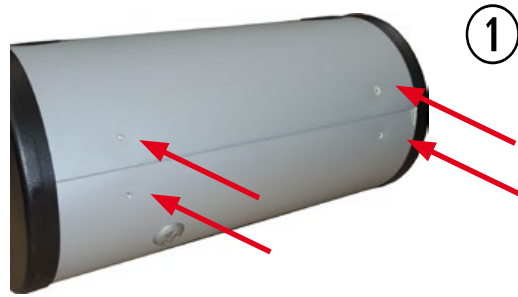
Abmessungen:



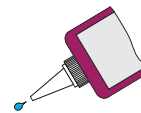
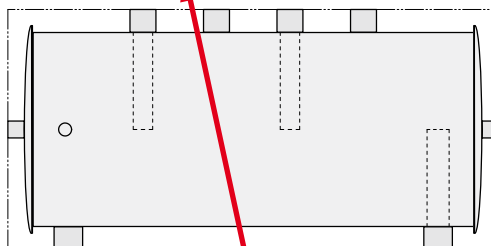
Art. Nr.	PrimärHK	SekundärHK	Module / Achsabstand	Fassungsvormögen	Arbeitsdruck	Maximale Arbeitstemperatur	Mindestarbeitstemperatur	Geprüftes Druck
HWDN25/125-50	G 1"1/4 F	G 1" F	DN25 - 125 mm	50 L	6 bar	90°C	-10°C	9 bar



**Wandbefestigungshalterungen
in Lieferumfang erhalten.**



**Zum Anschluss der Module müssen 1
"-Fittings verwendet werden. (Nicht
im Lieferumfang erhalten).**



Dichtmittel